

# PROJECT CERTAINTY



You have heard the stories — or you have told them yourself — about capital projects burdened by startup delays and excessive costs. Decades-old project methods are not helping anymore.

Today, successful integrated project execution—whether a greenfield new build, a modernization, or a migration—requires all of us to go beyond traditional thinking.

Emerson’s Project Certainty approach provides a path to better project results by eliminating cost, accommodating late changes, and reducing complexity. The following stories should make it easy to envision your own future project savings and successes.



*Learn more about Project Certainty.*

# Mahou-San Miguel *(Food & Beverage, Spain)*



## Maintaining a Legacy

### Ensuring On-Time Delivery

Mahou-San Miguel needed to modernize the control system it used for reliable operation of its largest factory to face the challenges of Industry 4.0. The brewery, the second largest in Europe, was essential to the delivery of the top-quality beers customers had come to expect from Mahou-San Miguel for the last 125 years.

Prior to the control system change, Mahou-San Miguel had to invent various complicated methods to share data, making it difficult to trace maintenance issues throughout the software and to monitor and solve production issues quickly. The organization wanted a control system that would be open for the easy exchange of data with other systems.

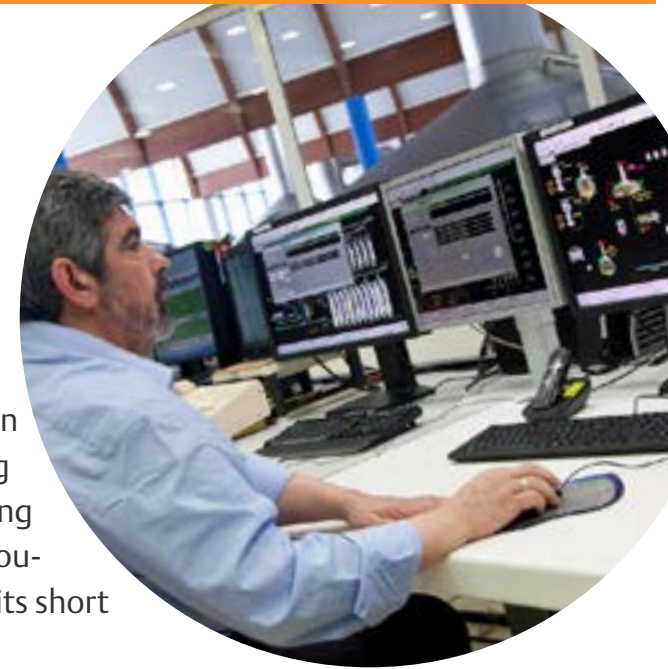
Though Mahou-San Miguel knew it needed a change, the company could not afford an extended outage that would disappoint loyal customers. Over the entire three-phase, 5-year project, the organization would have only a single shutdown window of one week. All other programmed shutdowns would occur in phases during weekends.

### Make it Simple

Mahou-San Miguel selected Emerson after an in-depth study of the state-of-the-art in automation technologies. Emerson's expert knowledge and DeltaV™ distributed control system (DCS) with Electronic Marshalling and CHARMS technology, would allow the company to plan a complicated control system migration, and deliver it without extended production upset.

Implementing DeltaV and wireless communication allowed Mahou-San Miguel to introduce flexibility into the installation of the brewery's control system. Electronic marshalling simplified the configuration of I/O enclosures and prevented I/O problems from causing delays and extending the planned shutdown window of the plant.

Emerson wireless technologies enabled the commissioning and start-up of valve nodes in the field, rather than in the control room, saving significant commissioning time, and allowing Mahou-San Miguel to maintain its short downtime window.



***“By taking advantage of expert knowledge and key technology, we were able to shorten our stoppage window significantly. This meant we could deliver the upgrades we needed without disappointing our customers.”***

- Santiago España, Industrial Automation Systems Manager,  
Mahou-San Miguel

### Quality Results

Because Mahou-San Miguel couldn't afford to extend its shutdown or project deadlines, the plant's upgrade project had to be done right the first time. A great deal of effort and resources were devoted to FAT testing, resulting in success.

By creating a detailed and personalized FAT procedure focused on critical functions, and working with Emerson control systems specialists and Mahou-San Miguel process specialists, the organization completed its migration project within its short shutdown window, in three different phases, without changes in the budget or schedule.

A satisfied project schedule and no risk of product shortage ensured that there would be only satisfied customers drinking Mahou-San Miguel in Spain and across the globe.

*Learn more about Project Certainty.*

# Project Certainty



## Emerson

### North America

1100 W. Louis Henna Blvd.  
Round Rock, TX 78681-7430,  
United States

☎ +1 800 833 8314

### Latin America

1300 Concord Terrace Suite # 400  
Sunrise, Florida 33323,  
United States

☎ +1 954 846 5030

☎ +1 954 846 512

### Europe

Blegistrasse 21  
6341 Baar,  
Switzerland

☎ +41 41 768 61 11

☎ +41 41 761 87 40

### Asia/Australia

1 Pandan Crescent  
Singapore 128461

☎ +65 6777 8211

☎ +65 6777 0947

### Middle East/Africa

PO Box 17033  
Jebel Ali Free Zone - South 2  
Dubai, United Arab Emirates

☎ +971 4 811 8100

☎ +971 4 886 5465

🌐 [www.emerson.com/en-us/expertise/automation/project-certainty](http://www.emerson.com/en-us/expertise/automation/project-certainty)

©2020, Emerson. All rights reserved.

The Emerson logo is a trademark and service mark of Emerson Electric Co. All other marks are the property of their respective owners.

The contents of this publication are presented for informational purposes only, and while every effort has been made to ensure their accuracy, they are not to be construed as warranties or guarantees, express or implied, regarding the products or services described herein or their use or applicability. All sales are governed by our terms and conditions, which are available on request. We reserve the right to modify or improve the designs or specifications of our products at any time without notice.

**EMERSON. CONSIDER IT SOLVED.™**

*Learn more about Project Certainty.*