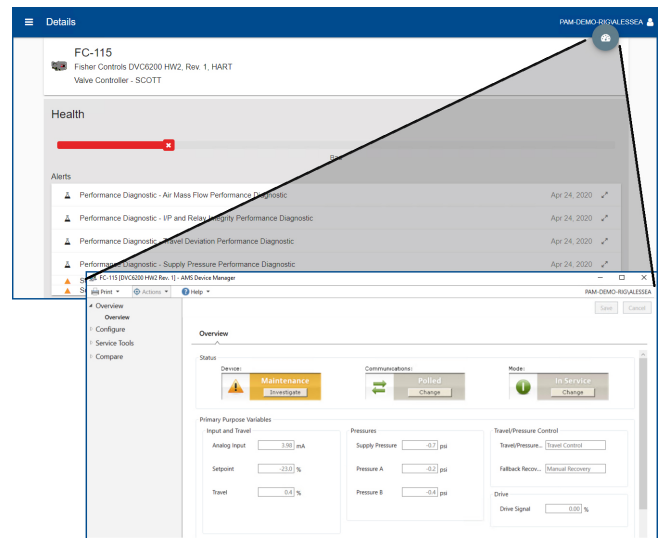


# AMS Device Manager Device View

- Intuitive, browser-based interface showing device health dashboards
- Efficiently plan maintenance activities based on up-to-date device health and calibration status
- Quickly identify and resolve issues with direct access to device screens for troubleshooting
- Track device status during projects, including commissioning, shutdowns, turnarounds, and outages



Use Device View to easily launch device screens for troubleshooting.

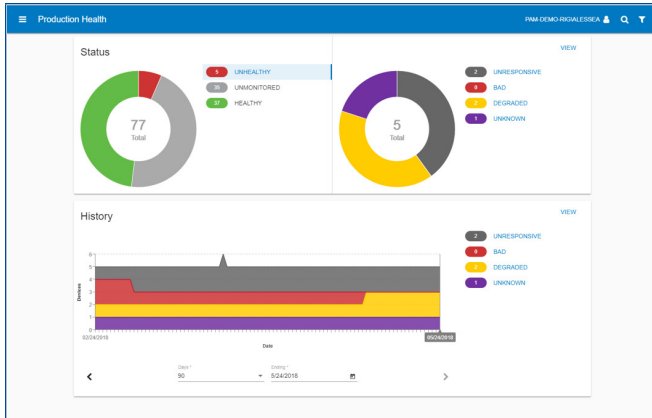
## Overview

Predictive maintenance helps plants avoid unplanned shutdowns and inefficient practices that eat away at profits. AMS Device Manager helps avoid unnecessary downtime by providing a window into the health of intelligent field devices. It gives your maintenance and operations personnel the ability to work smarter and safer. Based on real-time condition data, plant staff can respond quickly and make informed decisions on whether to maintain or replace field devices before they impact operations.

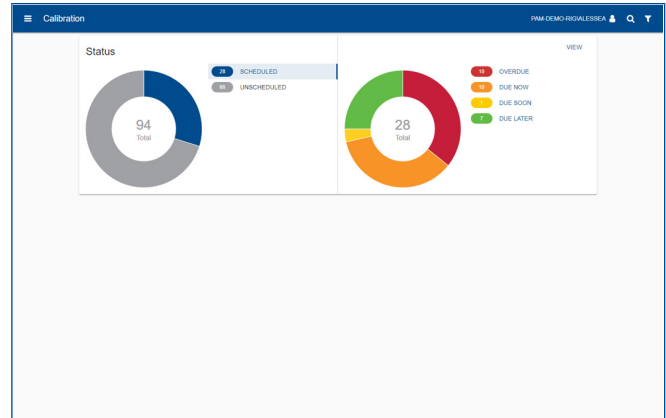
## Extend Asset Management

Device View extends your AMS Device Manager system by delivering device health, calibration status and project information through a browser-based interface. With Device View, you can quickly see which devices need maintenance and can view recommended actions from the manufacturer – from any place that there is a browser connection.

Through intuitive dashboards and focused alerts, technicians can quickly access the data needed to respond quickly. When additional work is needed, Device View can launch into the device screens for troubleshooting and configuration, even from a machine without AMS Device Manager installed.



Quick access to health of devices in production.



Plan activities based on device calibration status.

## Insight into Unhealthy Devices

Device View allows you to filter your devices by device status. You can easily see only failed devices, devices that need maintenance, unresponsive devices, devices with abnormal activity – or any combination of these.

Device View trends unhealthy device history, allowing you to track how your instrument maintenance program is doing over time. You can change the range dates on the trend chart to see long term or short term trends.

Easily view all tags that are currently in alert. Or look at past alerts. Quickly see the criticality of an alert, how long the device has been in alert, and the priority of the asset.

When needed, easily export device health data to Microsoft Excel.

## View Calibration Status

Device View allows you to filter your devices by calibration schedule. Sort by calibrations that are overdue, scheduled this week, scheduled this month, or scheduled for the future – or any combination of these.

Easily view all tags that need calibration. Sort by calibration schedule to streamline your calibration processes.

When needed, easily export device calibration data to Microsoft Excel.

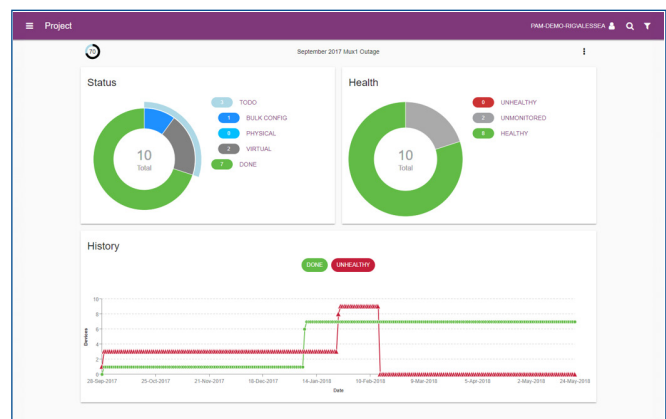
## Project Tracking and Status Details

Device View allows you to filter devices out of production by including them in projects. Project designation is useful for commissioning, shutdowns, turnarounds, and outages.

The project list view can be filtered by current or past projects and can be further sorted by name, progress, or duration. There is also the option to generate a project validation report directly from Device View.

By selecting a project, you are able to view more details of its progress and devices. This includes a breakdown of how many devices have been marked completed and which are left to do and insight on current and historical device health.

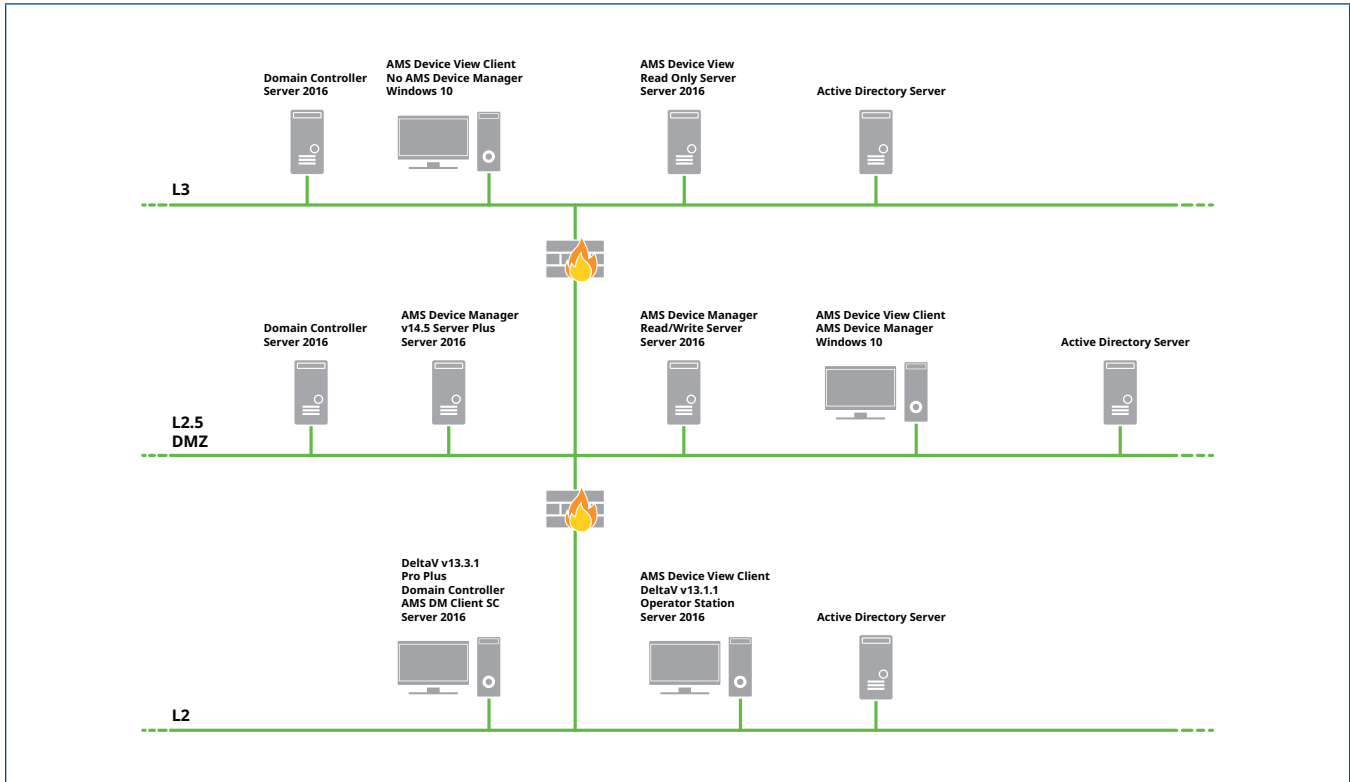
When needed, easily export project data to Microsoft Excel.



Easily track completion of projects.

## Secure Access from Anywhere

Device View provides Read or Read/Write privileges in addition to permissions set in AMS Device Manager User Manager. Users can securely access the thin-client on their mobile devices from anywhere on the network.



Self-signed security certificates allow flexible installation for complex network architectures.

## Ordering Information

Model Number	Part Number
Device View User License	AW7003DV1 (1 license is required for each concurrent user that will access Device View)

©2024, Emerson. All rights reserved.

The Emerson logo is a trademark and service mark of Emerson Electric Co. The AMS logo is a mark of one of the Emerson family of companies. All other marks are the property of their respective owners.

The contents of this publication are presented for informational purposes only, and while diligent efforts were made to ensure their accuracy, they are not to be construed as warranties or guarantees, express or implied, regarding the products or services described herein or their use or applicability. All sales are governed by our terms and conditions, which are available on request. We reserve the right to modify or improve the designs or specifications of our products at any time without notice.

### Contact Us

[www.emerson.com/contactus](http://www.emerson.com/contactus)