

AMS Device Manager Data Collector for AMS Optics

- AMS Device Manager Data Collector delivers instrument and valve health information to relevant personas, no matter where they are
- Connect multiple AMS Device Manager systems to a single AMS Optics installation and display KPIs in a single dashboard
- Create work requests for instruments and valves and implement closed loop work processes with CMMS (SAP or IBM Maximo)
- Easily collaborate across multiple users and departments to resolve issues based on data from intelligent field devices



AMS Device Manager Data Collector provides users the ability to stay in touch with the health of instruments and valves from anywhere, including their mobile phones.

Introduction

The AMS Device Manager Data Collector enables intelligent field devices health to be centralized in AMS Optics. Asset health is delivered to the relevant users in a clear and meaningful way. This means you can act before a problem affects the process—resulting in poor product quality, or worse, a costly shutdown.

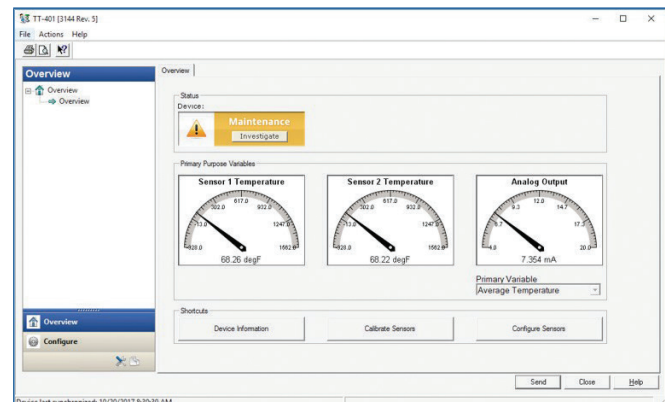
Now, users can quickly identify which valves are bad/unhealthy enabling them to address issues in a timely manner. The AMS Optics Portal dashboard provides a KPI for devices due for calibration to help drive maintenance work.

Complete Connectivity

Using the AMS Device Manager ASI, users can remotely view process variables and monitor device health from HART, WirelessHART, FOUNDATION Fieldbus, Profibus, and other devices connected to various host systems, including DeltaV™, Ovation™, RS3™, PROVOX™, and technology from many other suppliers.

Easy Integration

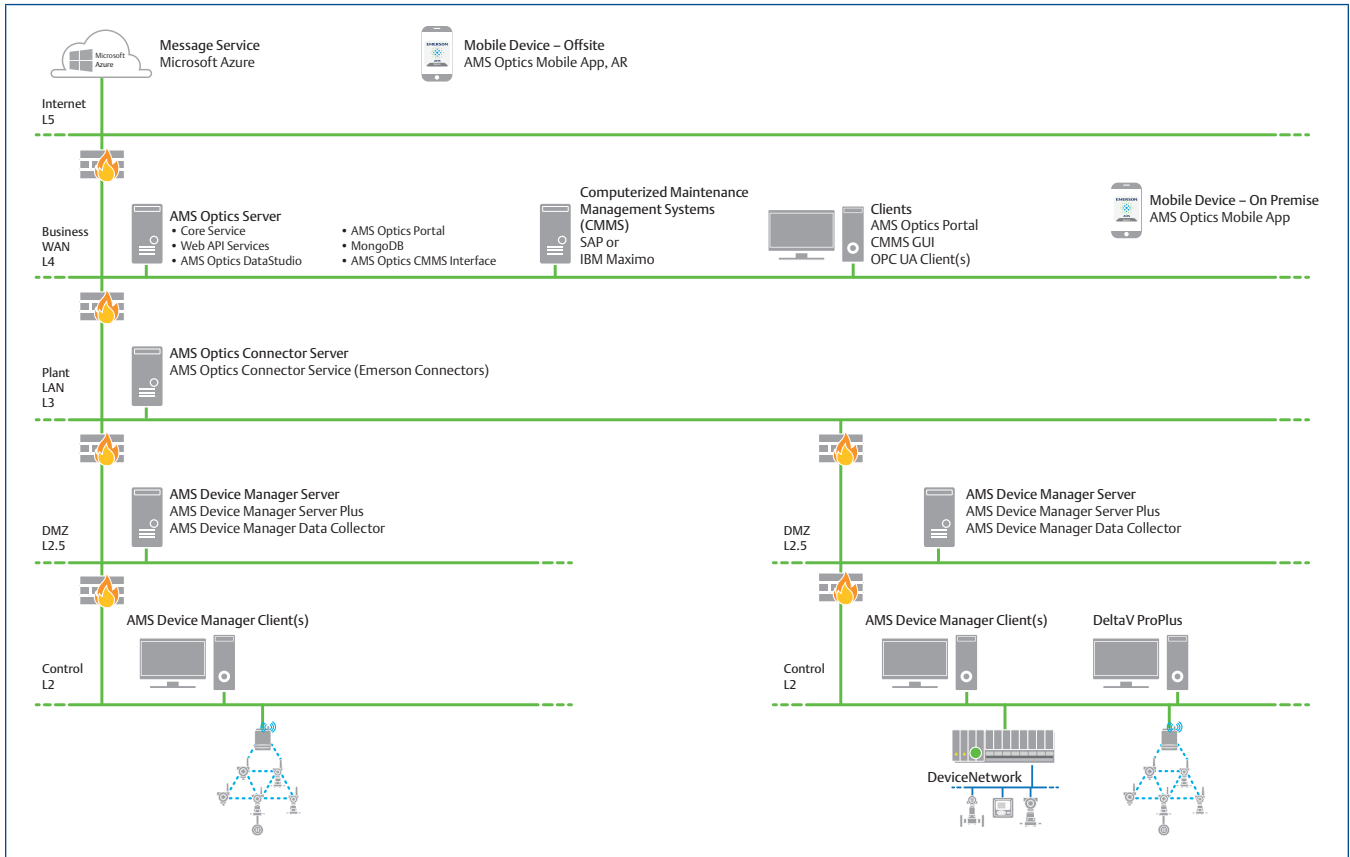
With no custom engineering or mapping effort, your entire AMS Device Manager system(s) is interfaced to AMS Optics, ready to monitor thousands of devices.



Easily launch from AMS Optics into a device dashboard in AMS Device Manager for further health status information and diagnostic capabilities.

Layered Security Keeps Networks Safe

The AMS Device Manager Data Collector allows flexible installation for complex network architectures. If required, multiple proxies can be installed in between network levels to connect the AMS Device Manager to the AMS Optics server, allowing for layered network deployment, as shown below.



The AMS Device Manager Data Collector can be installed on either the AMS Device Manager Server Plus or Client SC Stations.

Connectivity to Multiple AMS Device Manager Systems

AMS Optics can connect to multiple AMS Device Manager systems through one AMS Optics Connector Service. This allows all your device and instrument data, managed in multiple databases, to be viewed in a single place, delivering increased efficiency and awareness.

AMS Optics Connector Service (Emerson Connectors) Requirements

Operating System	Windows 10 Pro Windows 10 Enterprise Windows 10 IoT Enterprise 2016 LTSB (64-bit) Windows Server 2019 Datacenter Windows Server 2019 Standard Windows Server 2016 Datacenter Windows Server 2016 Standard
CPU Architecture	64-bit
Processor	2.4 GHz, 4-Core processor, Intel Core i5, or better
Memory	4 GB RAM (supported) 8 GB RAM (recommended)
Hard Drive	SATA (supported) SATA or better (recommended)
Available Disk Space	20 GB (supported) 100 GB (recommended)
Internet Information Services (IIS)	v8.5, v10 (supplied with OS)
Network	1x 1GB NIC

Proxy Requirements

Operating System	Windows 10 Pro Windows 10 Enterprise Windows 10 IoT Enterprise 2016 LTSB (64-bit) Windows Server 2019 Datacenter Windows Server 2019 Standard Windows Server 2016 Datacenter Windows Server 2016 Standard
CPU Architecture	64-bit
Processor	2.4 GHz, 2-Core processor, Intel Core i3, or better
Memory	2 GB RAM
Hard Drive	SATA (supported) SATA or better (recommended)
Available Disk Space	20 GB
Internet Information Services (IIS)	v8.5, v10 (supplied with OS)
Network	1x 1GB NIC

Additional Specifications

Browser	Current versions Google Chrome Microsoft Edge
Ethernet	One or more Ethernet ports (1GB NIC)
Internet Connectivity	A high-speed Internet connection is recommended to download installations and patches, register software, and receive alerts and messages on the mobile application.
Screen Resolution	Minimum: SXGA (1280x1024 pixels)
Supported Anti-virus Software	Symantec™ Endpoint Protection McAfee™ Endpoint Norton™ Security with Backup
Supported Virtualization	VMware v6.0 up to v7.0 HyperV 2012, 2016, 2019, 2022

AMS Device Manager Versions Supported

13.1.1 - 14.5 (for server operating systems 2008/2016 that are 64-bit only)

©2023 Emerson. All rights reserved.

The Emerson logo is a trademark and service mark of Emerson Electric Co. The AMS logo is a mark of one of the Emerson family of companies. All other marks are the property of their respective owners.

The contents of this publication are presented for informational purposes only, and while diligent efforts were made to ensure their accuracy, they are not to be construed as warranties or guarantees, express or implied, regarding the products or services described herein or their use or applicability. All sales are governed by our terms and conditions, which are available on request. We reserve the right to modify or improve the designs or specifications of our products at any time without notice.

Contact Us

www.emerson.com/contactus