

# Applying the Digital Twin to Leaching

Mining

Dynamic simulation with Mimic Simulation Software provides a high-performance solution for operator training and control system optimization. This Digital Twin technology delivers the complete environment for control system optimization and is an effective tool for teaching process and control engineers the control and operation of leach tanks and elution columns.

## Leaching Modeling

Solutions for heap leaching include dynamic models of the following process areas:

- Leach Tanks
- Feed Tanks
- Elution Columns
- Regeneration Tanks
- Discharge Tanks

## Application Capabilities

### Leach Tank

- Dynamic, real-time mass and energy balances with individual component tracking.
- Reaction modeling using the Arrhenius equation for reaction rate constants.
- Tunable reaction rate constants (activation energies, pre-exponential factors, and reaction orders) for both, forward and reverse reactions.

### Elution Column

- Dynamic, real-time mass and energy balances.
- Ion-exchange or affinity reaction models using the power law dependencies with the Arrhenius type equation for reaction rate constants.
- Dynamic, real-time individual component tracking with realistic composition profiles.
- Tunable reaction rate constants (activation energies, pre-exponential factors, and reaction orders) for both, forward and reverse reactions.

## Mimic Simulation Software



Train operators on infrequent and dangerous process occurrences



Test control system enhancements



Transfer knowledge from seasoned to inexperienced operators

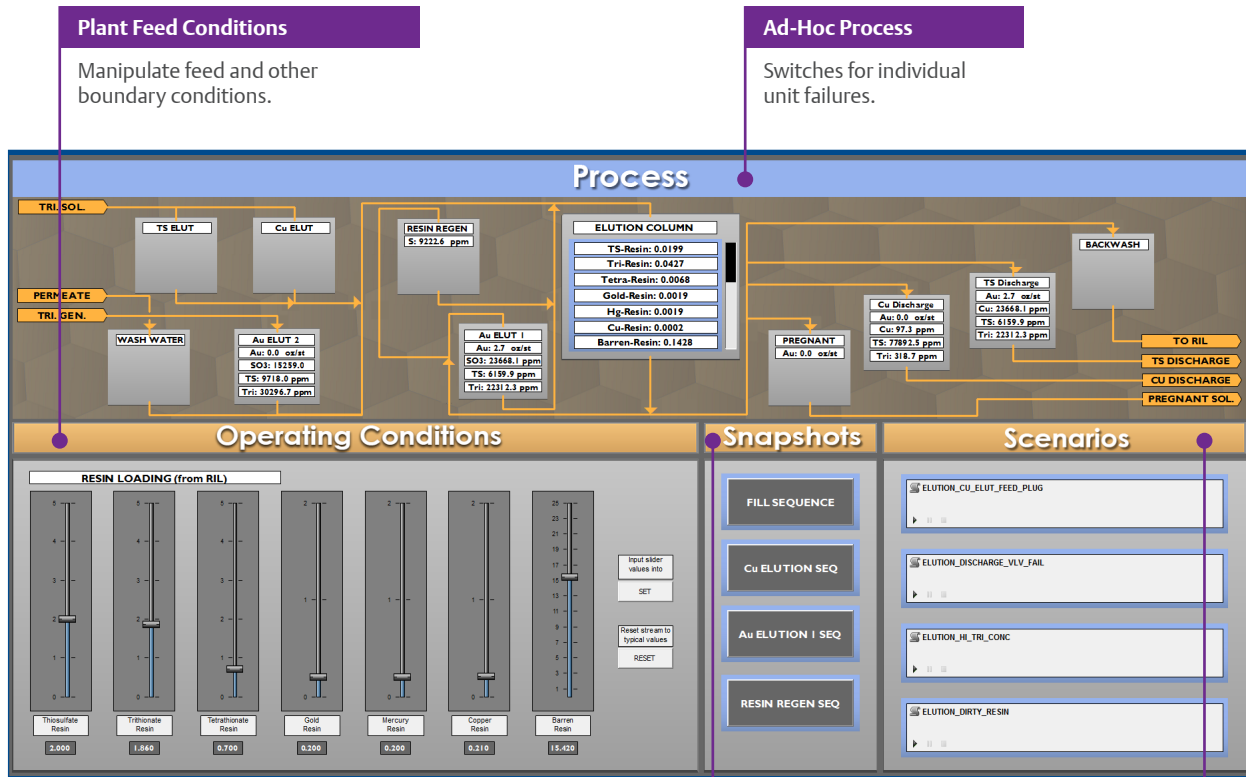


Increase overall plant safety

## Instructor Station

Instructor controls in Mimic and instructor screens in Mimic Component Studio allow your training team to prepare for working with the control system and process. Any element in Mimic can be manipulated or controlled, and instructor screens provide

easy access in one location. Typical controls allow instructors to manipulate operating conditions, such as boundary conditions and compositions, introduce ad-hoc device failures, control scripted training scenarios, and restore snapshots to steady-state operations.



**Plant Feed Conditions**  
Manipulate feed and other boundary conditions.

**Ad-Hoc Process**  
Switches for individual unit failures.

**Process Snapshots**

Control and restore full steady-state, cold, or other plant conditions.

**Scripted Scenarios**

Pre-engineered scenarios with dynamic representation of student scores.

**Emerson**  
North America, Latin America:

+1 800 833 8314 or  
+1 512 832 3774

**Asia Pacific:**  
65 6777 8211

**Europe, Middle East:**  
+41 41 768 6111

[www.emerson.com/mimic](http://www.emerson.com/mimic)

©2019, Emerson. All rights reserved.

The Emerson logo is a trademark and service mark of Emerson Electric Co. All other marks are the property of their respective owners.

The contents of this publication are presented for informational purposes only, and while diligent efforts were made to ensure their accuracy, they are not to be construed as warranties or guarantees, express or implied, regarding the products or services described herein or their use or applicability. All sales are governed by our terms and conditions, which are available on request. We reserve the right to modify or improve the designs or specifications of our products at any time without notice.