

Rosemount™ TankMaster™ Proof-Test Manager

Allows you to perform proof-tests remotely from the control room

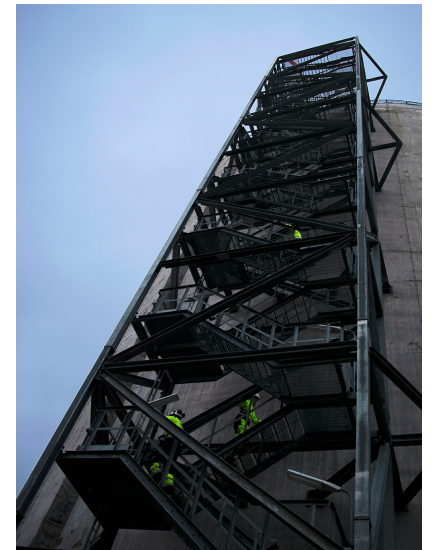
Improve **safety** and reduce risk of **human errors** with a comprehensive proof-test **solution**



Proof-test challenges

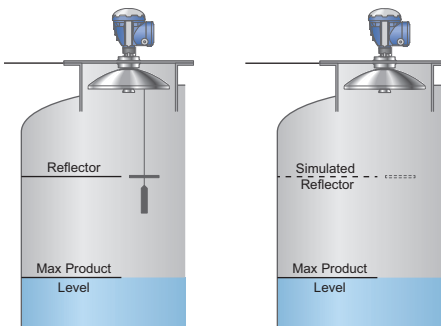


Proof-testing is a critical part of a radar-based overflow prevention system. Comprehensive proof-tests, including filling tanks to safety limits, are often impractical, time consuming, and related to safety risks. They often affect tank operations and can cause costly downtime, which makes them expensive and difficult to perform.



Reduce risk of climbing high tanks when performing proof-tests from the control room.

Quick and safe automated solution



Rosemount 5900 Radar Level Gauges allow for simultaneous remote proof-testing and level measurements. Tanks that were previously difficult to proof-test during operations can now use the new innovative simulated reference reflector for this purpose.

- Perform safe proof-testing of the Rosemount Tank Gauging System remotely from the control room
- Proof-testing can be done either with a real or simulated reference reflector
- Use the wizard to step-by-step perform one or more comprehensive or partial proof-tests
- Get detailed automatically generated and stored reports for each proof-test
- Access proof-test history records
- Schedule proof-tests
- Customize checklists

How does it work?



The Rosemount 5900 Radar Level Gauge is designed with functionality that lets you proof-test high alarms and verify correct product surface measurement. The Rosemount 5900 gauge allows you to combine continuous product level monitoring with proof-testing at regular intervals. It is based on a dedicated reference reflector that introduces a radar echo at a predefined position in the tank.



Remote proof-testing from the control room

The Rosemount TankMaster Inventory Management Software has advanced proof-testing support.

The built-in proof-test manager allows operators to perform proof-testing of the Rosemount Tank Gauging overflow prevention system safely, and remotely from the control room.

A wizard guides you step by step to perform one or several comprehensive, or partial, proof-tests.

A detailed report is automatically generated and stored for each proof-test. Additional features include proof-test history records, scheduling, and customized checklists.

Benefits in practice

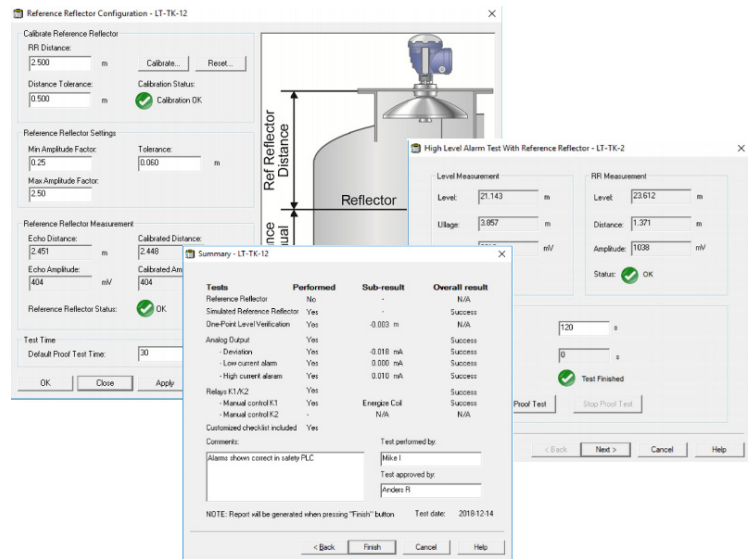
By using TankMaster, proof-tests can be performed more frequently because the impact on tank operation is minimal. No manual work, such as climbing tanks, disconnecting wires, or opening junction boxes is required, so the risk of human errors is drastically reduced.

Tanks that were previously difficult to proof-test during operations can now use the new innovative simulated reference reflector for this purpose. Proof-tests can therefore be done without any mechanical modifications, and at a very low cost.

Performing proof-tests remotely eliminates work in the field, saves a considerable amount of time and reduces the risk of human errors and personal injuries.



Rosemount TankMaster Inventory Management Software has advanced built-in support for remote proof-testing which allows for both cost savings and a safer work environment.



Emerson Terms and Conditions of Sale are available upon request.

The Emerson logo is a trademark and service mark of Emerson Electric Co. Rosemount is a mark of one of the Emerson family of companies. All other marks are the property of their respective owners. © 2019 Emerson. All rights reserved.

Emerson Automation Solutions
Box 150 (Visiting address: Layoutvägen 1)
SE-435 23 Mölnlycke
Sweden
+46 31 337 00 00
Sales.RTG@Emerson.com

[Emerson.com](https://www.emerson.com)
 [Facebook.com/Rosemount](https://www.facebook.com/Rosemount)
 [LinkedIn.com/company/Emerson-Automation-Solutions](https://www.linkedin.com/company/Emerson-Automation-Solutions)
 [Twitter.com/Rosemount_News](https://www.twitter.com/Rosemount_News)

00807-0600-5100, Rev AB

EMERSON