

ROSEMOUNT™ TANK GAUGING SYSTEM

Insights delivered. Right away.





# Everything you need for total control

## Efficiency

Access to precise data in real time speeds up plant operations

## Safety

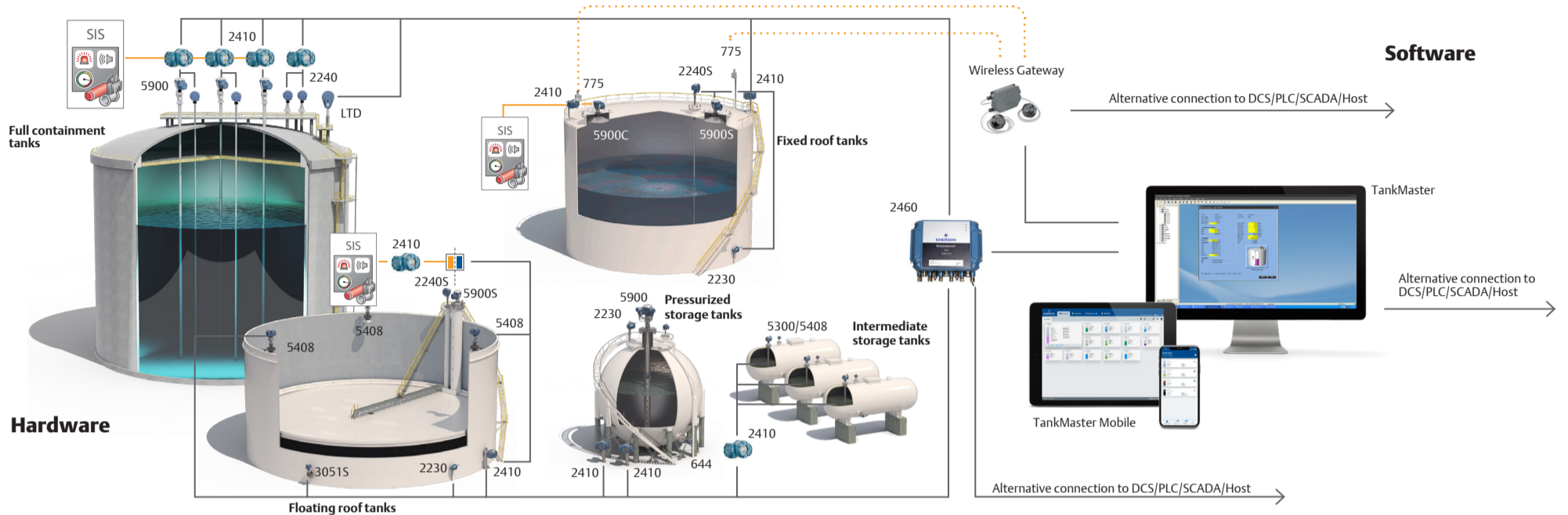
Overflow prevention solutions fulfilling API 2350 and IEC 61511

## Accuracy

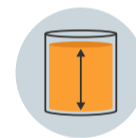
Reliable net volume calculations based on API and ISO standards

## Scalability

Open communication standards make it easy to add or replace devices



## Rosemount TankMaster™



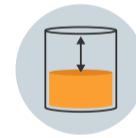
### Inventory control

Accurate measurement and volume calculations.



### Certified custody transfer

Custody transfer tank data certified by legal metrological institutes.



### Overflow prevention

Reliable safety monitoring and alarm management.

## System highlights

### 2-in-1

Simplify installation with two radar gauges for level and overflow measurements in one tank opening.

### Floating roof monitoring

Improve reliability with continuous surveillance via Rosemount TankMaster software.

### Wireless

Save cost and installation time. Allow for redundant communication, and connection of previously isolated tanks.

### Emulation

Perform cost-efficient step-by-step upgrade of field and control room equipment from all major suppliers.

### Overflow prevention and proof-testing

Fulfill safety regulations and benefit from remote comprehensive proof-testing.

### Mobility

Stay connected – anytime, anywhere.



# Hardware for measurements

## Radar Level Gauges & Antennas



Radar Level Gauge  
**Rosemount 5900S**  
(with 2-in-1 option)

Radar Level Gauge  
**Rosemount 5900C**

Parabolic

Still-pipe Array



Horn

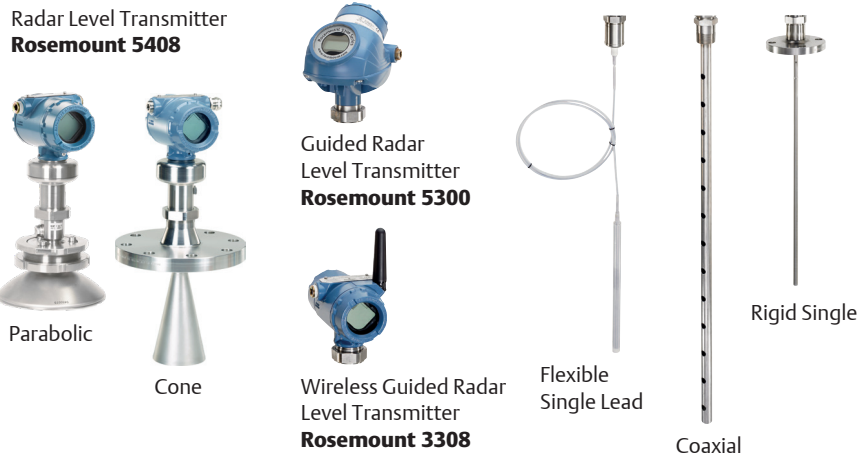


Cone



LPG and LNG  
(Liquefied Gas)

## Radar Level Transmitters & Antennas



Radar Level Transmitter  
**Rosemount 5408**

Guided Radar  
Level Transmitter  
**Rosemount 5300**

Wireless Guided Radar  
Level Transmitter  
**Rosemount 3308**

Parabolic

Cone

Rigid Single

Flexible  
Single Lead

Coaxial

## Connectivity and Data Access



System Hub  
**Rosemount 2460**

Tank Hub  
**Rosemount 2410**

Display  
**Rosemount 2230**

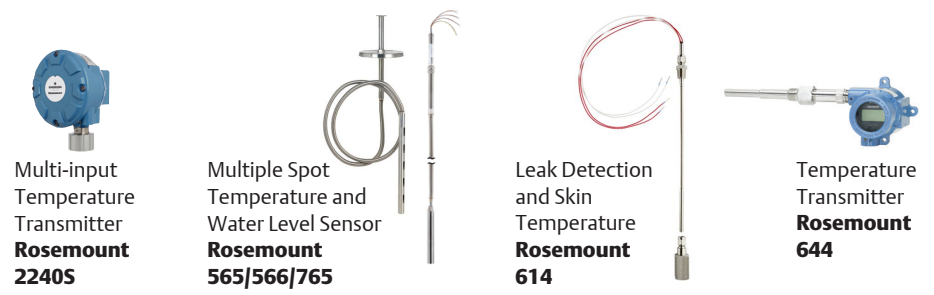
## Wireless Connection



Emerson Wireless 1410S  
**Gateway**

Emerson Wireless 775  
**THUM™ Adapter**

## Temperature, Water and Pressure Measurement



Multi-input  
Temperature  
Transmitter  
**Rosemount 2240S**

Multiple Spot  
Temperature and  
Water Level Sensor  
**Rosemount 565/566/765**

Leak Detection  
and Skin  
Temperature  
**Rosemount 614**

Temperature  
Transmitter  
**Rosemount 644**

## Point Level Detection



Single Point  
Temperature Sensor  
**Rosemount 65/114C/214C**

Pressure Transmitter  
**Rosemount 3051S/2051**

Level Detector  
**Rosemount 2140**

Level Detector  
**Rosemount 2160**