

# A Simple Solution for Today's Tighter Emissions Standards



## **ENARDO™** Addressing the need for greater emissions control.

### **Tightening emissions regulations**

The EPA has limited the level of emissions allowed through its “Quad O” regulation.

Dead weight, oblong-shaped thief hatches designed in the 1940’s are still in use on many well pad tanks. These hatches were not designed for emissions control and can be a risk in meeting today’s regulations.

Tighter regulations call for tighter tank top solutions.

### **A simple solution for replacing oblong thief hatches**

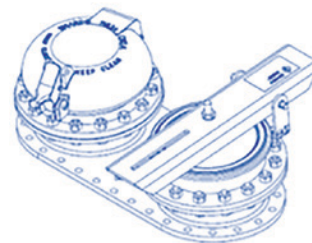
Emerson has developed a unique solution to address this problem. A custom-designed adapter, bundled with a high-performance thief hatch and emergency vent, fit perfectly on the existing oblong opening while providing industry-leading emissions performance.

In addition to emissions control, the escape of evaporated tank liquid is also minimized which conserves the tank’s valuable oil or gas contents.

Emerson’s tight-sealing storage tank solutions can help you meet your Quad O compliance challenges.



A dead weight, oblong-shaped thief hatch



Customized Adapter Bundle with Enardo™ ES-665 Thief Hatch and Model 2000 Emergency Vent



# A simple solution for today's tighter emissions standards

## How It Works

The adapter bundle is made up of three components:

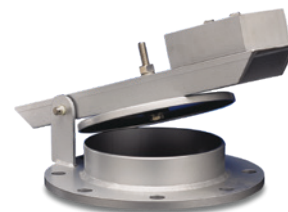
1. The adapter, which matches and covers the existing oblong-shaped tank opening
2. A thief hatch, which provides access for gauging and sampling, as well as pressure and vacuum relief
3. A small emergency vent, which provides an additional level of pressure relief for tank safety



**Oblong-shaped Adapter**  
Custom-designed to fit oblong openings of dead weight hatches



**Thief Hatch**  
High-Performance  
Model ES-665



**Emergency Vent**  
High-Performance  
Model 2000

## Features and Benefits

- Custom-designed to make upgrading oblong hatches fast and easy
- Includes high-performance thief hatch and emergency vent to reduce emissions risk
- Provides two levels of pressure relief, in addition to maintaining access for gauging and sampling

## Specifications

### Adapter

- **Sizes:** 8x18 in. and 8x22 in. API
- **Material:** Aluminum

### Thief Hatch

- **Model:** ES-665
- **Size:** 8 in. API
- **Pressure Settings:** 4.0 to 32 oz/sq. in.
- **Vacuum Settings:** 0.4, 0.9 and 3.5 oz/sq. in.

### Emergency Vent

- **Model:** 2000
- **Size:** 8 in. API
- **Pressure Settings:** 2.0 to 32 oz/sq. in.

## Emerson Automation Solutions

### Americas

T +1 800 558 5853  
T +1 972 548 3574

 [webadmin.regulators@emerson.com](mailto:webadmin.regulators@emerson.com)

 [Emerson.com](http://Emerson.com)

### Europe

T +39 051 419 0611

 [Facebook.com/EmersonAutomationSolutions](https://www.facebook.com/EmersonAutomationSolutions)

### Asia Pacific

T +65 6777 8211

 [LinkedIn.com/company/emerson-automation-solutions](https://www.linkedin.com/company/emerson-automation-solutions)

 [Twitter.com/emr\\_automation](https://twitter.com/emr_automation)

### Middle East / Africa

T +971 4811 8100