

Gain the speed and reliability to ensure product quality.

Rosemount™ CT4215 Packaging Leak Detection System
Ensure product quality and consistency in food & beverage packaging lines.



Ensure product quality and leak-free packaging with real-time, inline leak detection.

Manufacturers of consumer packaged goods (CPGs) are challenged with accommodating unprecedented levels of package varieties, increasing production to meet market demands, and ensuring quality, safety and regulatory compliance.

Emerson can help manufacturers reduce waste and production losses caused by faulty packaging and meet quality requirements using the Rosemount CT4215 Packaging Leak Detection System. This automated, inline system can be configured to **test for leaks in a variety of pack types and applications, including Modified Atmosphere Packaging (MAP), CO₂ charged kegs and alcoholic spirit containers** to ensure producers can obtain consistent quality, increased flexibility, and changeover versatility.

“3 [out] of 5 [survey] participants are making processing and packaging changes to extend shelf life, prevent contamination, and present a more sustainable consumer package.”



“Over half of food packaging operations predict spending more on machinery in the near future for more modular equipment to increase production flexibility.”



“80% of food companies expressed interest in modular equipment, a statistic that has remained consistent in the last few years.”



Source: PMMI Trends and Advances in Food Packaging and Processing Report 2019



Handling an ever-increasing variety of products and pack sizes can pose significant challenges for quality control. Emerson's Rosemount CT4215 Packaging Leak Detection System tests the integrity of a variety of products and pack types in real time.

The Rosemount CT4215 enables quality assurance for a variety of package types.



The Rosemount CT4215 Packaging Leak Detection System enables packaging lines to ensure product quality, safety and regulatory compliance while optimizing production and reducing waste. With its patented laser technology and fully-automated, high-speed operation, you will be able to **test the sealing integrity of individual Modified Atmosphere Packaging (MAP) and beverage containers inline and in real time to meet high-quality standards.** Its small footprint, easy integration into your existing line, and ability to accommodate a variety of pack sizes and types will help you improve productivity and gain line flexibility.



Quality

Reduce costly product losses, waste and scrappage



Flexibility

Gain flexibility to meet market demands while maintaining productivity



Productivity

Gain insight into production line performance



Compliance

Ensure safe, quality products from your lines and on the shelf



With 100% inline testing of package seals, we deliver instantaneous analyses with highly sensitive and accurate results that optimize quality, improve compliance and reduce costs.

Enhance quality control and reduce waste and scrappage

- Test the sealing of individual packs inline with high speed and accuracy to ensure product quality and reduce product returns and recalls.
- Minimize product loss and packaging waste with instantaneous leak detection and save on labeling and secondary packaging materials with identification and rejection of leaking packs.

Optimize production and increase throughput.

- Avoid a production bottleneck with a fully-automated and non-destructive detection of packages.
- Gain complete visibility into batch quantities, rejection rates and patterns for more informed decisions to optimize the sealing and packing processes.

Improve packaging line flexibility and operational efficiency

- Accommodate quick and flexible product changeover with real-time detection and rejection of a wide variety of pack shapes, sizes, and types.
- Meet changing market demands with a modular system and configurable alarms capabilities to support your manufacturing needs.

Ensure product safety and compliance.

- Meet, or exceed, industry and brand owner regulations and standards with highly reliable Quantum Cascade Laser (QCL) technology.
- Ensure certified leak detection performance with 100% pack verification and reduce the risk of faulty packs.

Rosemount CT4215 Packaging Leak Detection System



Product overview

The Rosemount CT4215 uses laser technology to test the sealing of Modified Atmosphere Packaging (MAP) and CO₂ charged beverage containers by detecting trace gases and instantly rejecting leaky packs without disrupting the production line. It is equipped with user configurable alarms that send actionable alerts to operators when multiple faulty packs are detected, enabling optimized process control. The system's modular, flexible design allows accommodation of future gas requirements and new package types as well as easy integration into any packaging line.

Emerson.com/RosemountCT4215

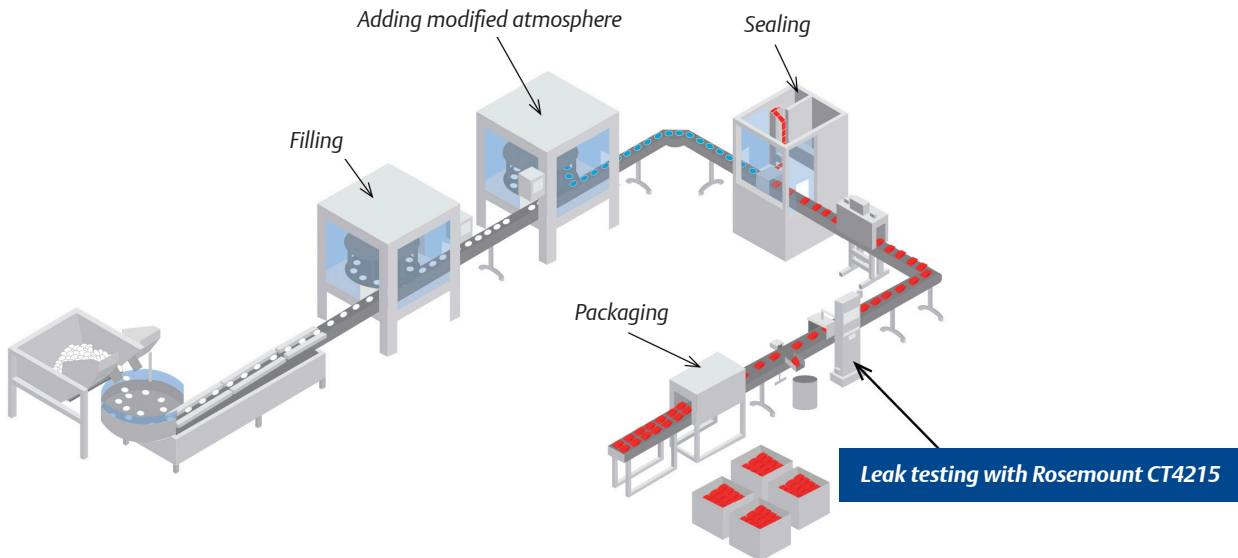
Key applications

- MAP and Beverage Packaging**
- **Products:** Meat, dairy, vegetables, bread, pasta, drinks, and more
 - **Package types:** Trays, pouches, bags, cans, kegs, and bottles
 - **Detected gas:** CO₂, CO, N₂O, and C₂H₆O

Key specifications

- Support all packaging types with minimal changeover
- Measure up to 200 packs per minute, inline and in real time
- Detect leaks at a sensitivity of < 0.3 mm*
- Meet 100% compliance in product inspections

*Can measure down to 0.2 mm depending on the application.



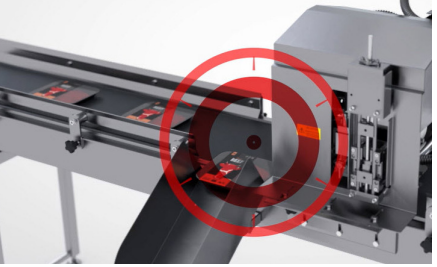
Ensure product and packaging quality assurance

Highly reliable and sensitive laser technology



- Identify leaks smaller than 0.3 mm using patented Quantum Cascade Laser (QCL) technology

Automated detection and rejection



- Identify and remove defective packs from the line without disrupting production

100% pack leak verification



- Ensure 100% product inspection without pack deformation or interference with the production line

Increase line flexibility and Improve productivity to meet market needs

Unmatched speed in pack seal testing



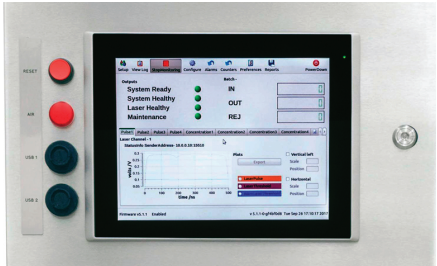
- Avoid a production bottleneck with inline measurements at speeds of up to 200 packs per minute—20 times faster than other inline seal testers

Small footprint and easy integration



- Trouble-free integration into your existing line with minimal downtime
- Small footprint simplifies installation into new or existing production lines

Full data logging and actionable alerts



- Gain visibility into production data with intuitive software
- Optimize the sealing process with configurable alarms and actionable alerts

Accommodate a wide range of applications and pack types

Modified atmosphere packaging (MAP)



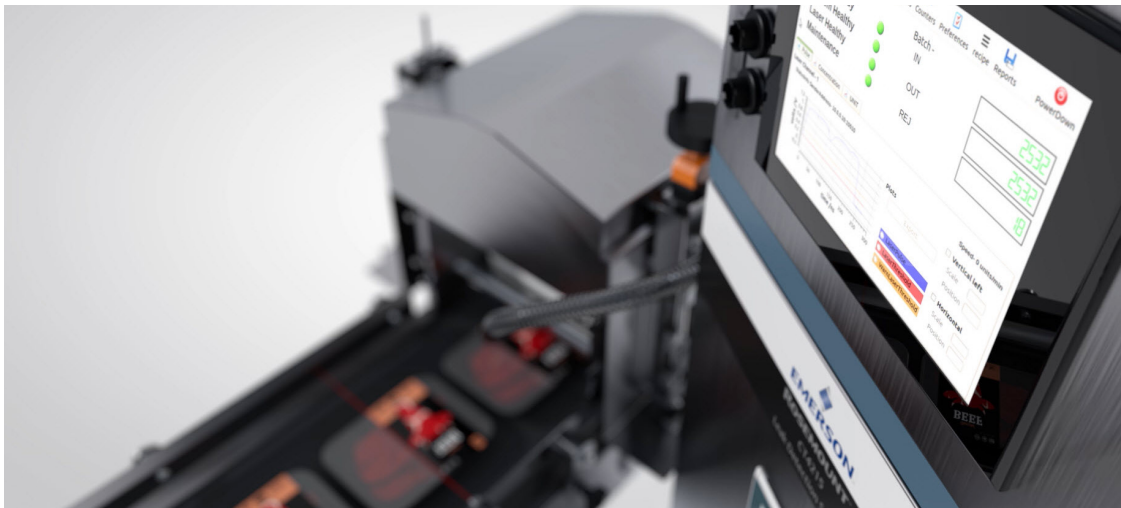
- Packaging media include trays, bags and pouches
- Test a wide range of products: Meat (fresh, processed, snacks), shredded cheese, flatbreads, ready meals and salads

Inline beverage testing



- Test beer, alcoholic spirits and carbonated beverages for microleaks without line stops
- Support all keg, bottle and can sizes with minimal changeover

Ensure leak-free packaging and product quality with real-time, inline leak detection.



With its unmatched speed and reliable laser technology, the Rosemount CT4215 is perfectly designed to help you gain line flexibility to meet changing market demands.

Learn more at [Emerson.com/RosemountCT4215](https://emerson.com/RosemountCT4215)

The Emerson logo is a trademark and service mark of Emerson Electric Co. Rosemount is a mark of one of the Emerson family of companies. All other marks are the property of their respective owners.

© 2022 Emerson Electric Co. All rights reserved.
00803-0200-4245 / Rev. AB



CONSIDER IT SOLVED™